



ELECTRONIC COPY

649444688
Report verification at igi.org



October 3, 2024
IGI Report Number **649444688**
Description **NATURAL DIAMOND**
Shape and Cutting Style **CUT CORNERED
RECTANGULAR MODIFIED
BRILLIANT**
Measurements **9.07 X 5.92 X 4.06 MM**
GRADING RESULTS
Carat Weight **1.91 CARAT**
Color Grade **J**
Clarity Grade **SI 2**
Cut Grade **VERY GOOD**

DIAMOND REPORT

October 3, 2024
IGI Report Number **649444688**
Description **NATURAL DIAMOND**
Shape and Cutting Style **CUT CORNERED RECTANGULAR
MODIFIED BRILLIANT**
Measurements **9.07 X 5.92 X 4.06 MM**

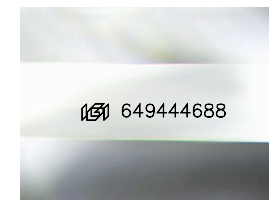
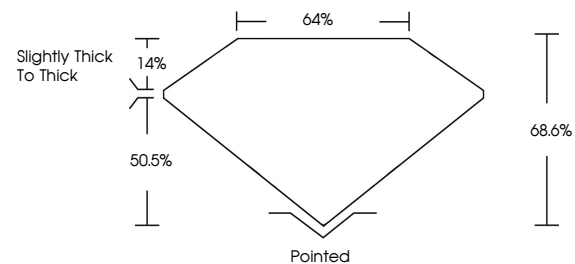
GRADING RESULTS

Carat Weight **1.91 CARAT**
Color Grade **J**
Clarity Grade **SI 2**
Cut Grade **VERY GOOD**

ADDITIONAL GRADING INFORMATION

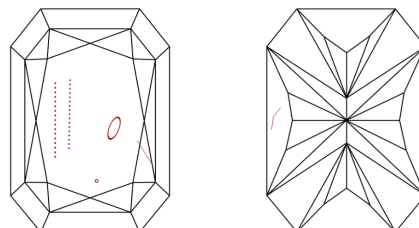
Polish **EXCELLENT**
Symmetry **EXCELLENT**
Fluorescence **NONE**
Inscription(s) **649444688**

PROPORTIONS



Sample Image Used

CLARITY CHARACTERISTICS



KEY TO SYMBOLS

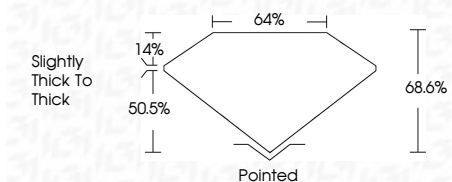
Red symbols indicate internal characteristics.
Green symbols indicate external characteristics.

COLOR

D - F	G - J	K - M	N - R	S - Z	FANCY
Colorless	Near Colorless	Slightly Tinted	Very Light Color	Light Color	

CLARITY

IF	VS ¹⁻²	VS ¹⁻²	SI ¹⁻²	I ¹⁻³
Internally Flawless	Very Very Slightly Included	Very Slightly Included	Slightly Included	Included



ADDITIONAL GRADING INFORMATION

Polish **EXCELLENT**
Symmetry **EXCELLENT**
Fluorescence **NONE**
Inscription(s) **649444688**



IGI

October 3, 2024
IGI Report No. 649444688
CUT CORNERED RECT. MODIFIED BRILLIANT
9.07 X 5.92 X 4.06 MM
1.91 CARAT
J
SI 2
VERY GOOD
88.6%
64%
Slightly thick to thick
Pointed
EXCELLENT
EXCELLENT
NONE
649444688

